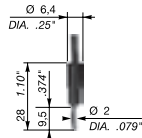
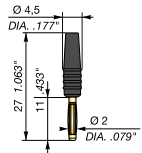


# Test devices

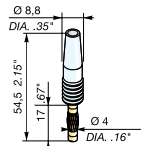
## Test plugs Test sockets



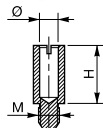
**FC2**



**FC2.EI.PJP**



**FC4**



**AL...**



**DCJ**

### FC... test plugs

These accessories, when used with measuring or control equipment, are used for trouble shooting or testing of a circuit, on the blocks equipped with a test socket or by use of a test device (for **FC2** only).

#### Selection

Description	Type	Order P/N	Packaging Weight kg
Test plug DIA. 2 mm .079" - Soldered connection : 1 mm <sup>2</sup> max. - 18 AWG	<b>FC2</b>	1SNA 007 865 R2600	
Test plug DIA. 2 mm .079" - Soldered connection : 1 mm <sup>2</sup> max. - 18 AWG	<b>FC2.EI.PJP</b>	1SNA 107 239 R0300	
Test plug DIA. 4 mm .16" - Soldered connection : 1,5 mm <sup>2</sup> max. - 16 AWG	<b>FC4</b>	1SNA 167 860 R0100	

### AL... test sockets

This accessory is screwed into the tapped holes of the connector bar of the terminal blocks. Some blocks are delivered socket mounted. This socket receives an **FC** test plug. The test sockets are characterized by their internal diameter.

#### Selection

Description	Type	Order P/N	Packaging Weight kg
Test socket DIA. 2 mm .079" H = 12 mm .472" - M3 screw	<b>AL2</b>	1SNA 163 043 R2100	
Test socket DIA. 2 mm .079" H = 11,7 mm .461" - M2,6 screw	<b>AL2</b>	1SNA 163 046 R2400	
Test socket DIA. 2 mm .079" H = 8,5 mm .335" - M3 screw	<b>AL2</b>	1SNA 163 070 R0000	
Test socket DIA. 2 mm .079" H = 9,6 mm .378" - M3 screw	<b>AL2</b>	1SNA 164 950 R0000	
Test socket DIA. 2 mm .079" H = 8,5 mm .335" - M2,6 screw	<b>AL2</b>	1SNA 167 319 R0600	
Test socket DIA. 3 mm .12" H = 9,5 mm .374" - M3 screw	<b>AL3</b>	1SNA 163 261 R0000	
Test socket DIA. 4 mm .16" H = 12 mm .472" - M3 screw	<b>AL4</b>	1SNA 163 240 R1700	
Test socket DIA. 4 mm .16" H = 12,3 mm .484" - M3 screw	<b>AL4</b>	1SNA 163 262 R0100	
Test socket DIA. 4 mm .16" H = 13,5 mm .532" - M4 screw	<b>AL4</b>	1SNA 168 237 R0500	
Test socket DIA. 4 mm .16" H = 17,5 mm .689" - M3 screw	<b>AL4</b>	1SNA 179 762 R1600	

### DC... test device on screw head

This patented device is mounted on the round screwdriver opening. It is used for trouble shooting, measuring and control for monitoring and repairing an installation, on blocks without a test socket. For this, the device receives an **FC2** test plug.

#### Selection

Description	Type	Order P/N	Packaging Weight kg
Test device for blocks with 5 mm spacing green <span style="color: green;">■</span>	<b>DCV</b>	1SNA 173 058 R0200	
Test device for MA 2,5/5 blocks blue <span style="color: blue;">■</span>	<b>DCB</b>	1SNA 105 028 R2100	
Test device for blocks with 6 mm spacing yellow <span style="color: yellow;">■</span>	<b>DCJ</b>	1SNA 173 059 R0300	
Test device for M4/6.D and MB 2,5/6 blocks grey <span style="color: grey;">■</span>	<b>DCG</b>	1SNA 163 218 R0500	
Test device for blocks with 8 mm spacing orange <span style="color: orange;">■</span>	<b>DCO</b>	1SNA 173 060 R0000	

